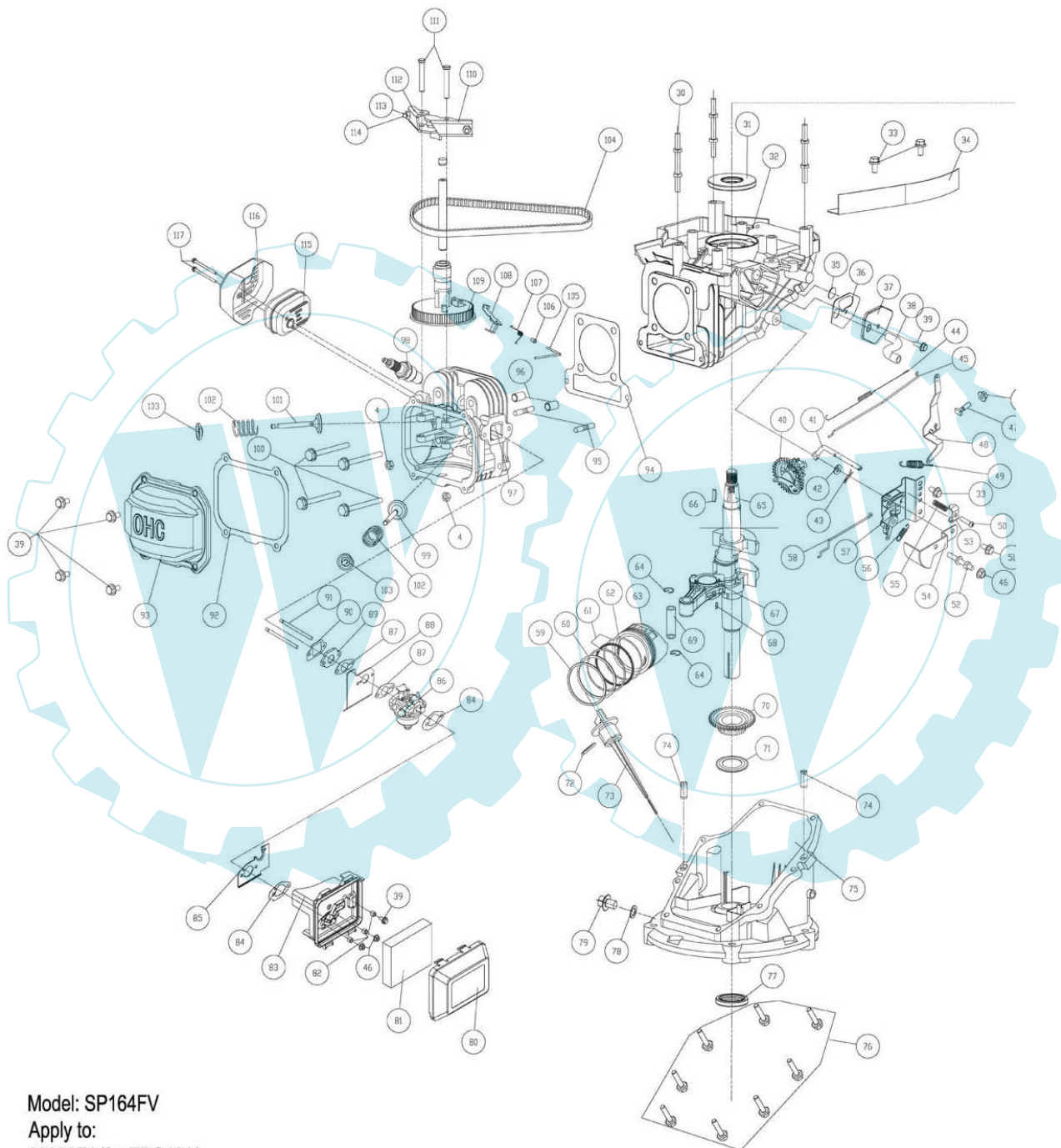
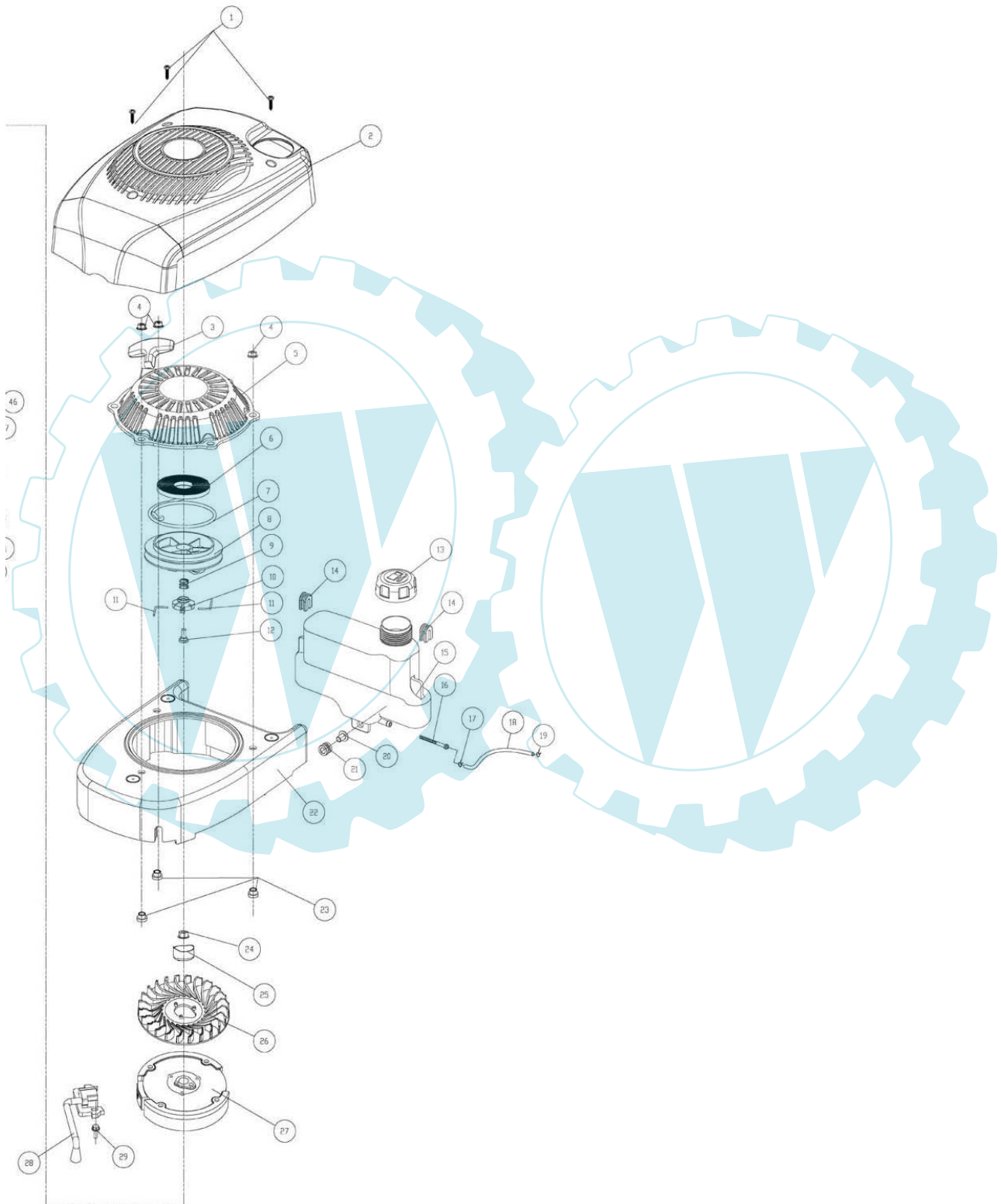


PowerG EXPLOSIVE DRAWING

Petrol tiller ---Engine



Model: SP164FV
Apply to:
00920ZA(for TDS40A)
2010-4-21



PowerG Spare Parts List

Engine-SP164FV(for TDS40A)

Pos. No	Part code	Part Description	QTY	losable	damage-able	Consum-able	PIC	Remark
1	B400057	cross head screw ST3.9x19	3	Y				
2	920001	exterior cover	1					
3	920002	starter grip	1		Y			
4	B220008	hexagon flange nut M6	5	Y				
5	920003	starter cover	1					
6	920500	volute spring	1					
7	920900	starter rope	1					
8	920004	starter pulley	1					
9	920501	plate spring	1					
10	920200	plate	1					
11	920201	starting lever	2					
12	920245	self-tapping screw	1					
13	920005	fuel tank cap assy	1					
14	920300	limit sets of fuel tank	2	Y				
15	920006	fuel tank	1					
16	920007	fuel filter	1					
17	920202	fuel pipe clip(Φ8.5)	1	Y				
18	920301	fuel pipe(305mm)	1					
19	920203	fuel pipe clip(Φ7)	1	Y				
20	920204	tank fixed bush	1					
21	920302	tank buffer sets	1					
22	920008	fan housing	1		Y			
23	920205	bush	3	Y				
24	B229006	hexagon flange nut M14X1.5	1					
25	920206	starter bowl	1					
26	920009	fan	1					
27	920207	flywheel	1					
28	920700	Ignition mouldle	1					
29	B131010	hexagon bolt with flang M6X20	1					
30	B174002	stud bolt M6X80	3					
31	920303	oil seal Φ62XΦ25.4X6	1					
32	920100	upper crankcase	1					
33	B131001	hexagon bolt with flang M6X12	3	Y				

34	920208	windshield	1		Y		
35	920010	valve	1				
36	920901	gasket	1				
37	920011	breath cover assy	1				
38	920304	breath tube	1	Y			
39	B131002	hexagon bolt with flang M6X16	6				
40	920101	speed governor assy	1				
41	920209	pendulum	1				
42	B504006	washer Φ 6	1	Y			
43	920502	circlip	1				
44	920503	rod spring	1		Y		
45	920210	throttle lever	1				
46	B228001	hexagon flange nut M6	4	Y			
47	920211	square head bolts	1				
48	920212	rocker arm	1				
49	920504	governor spring	1				
50	B320015	cross head screw M5X20	1	Y			
51	B131006	hexagon bolt with flang M6X10	1		Y		
52	920246	stud bolt	1				
53	920213	cable linit	1				
54	920214	plate	1				
55	920505	compressed spring	1				
56	920506	rocker arm spring	1				
57	920215	control assy	1				
58	920216	damper with lever	1				
59	920217	piston ring sets1	1				
60	920218	piston ring sets2	1				
61	920219	scraper ring	2				
62	920220	expcmdr	1				
63	920221	piston	1				
64	920222	piston pin clip	2				
65	920223	crankshaft assy	1				
66	B701407	woodruff key 4X5.5X25	1	Y			
67	920102	connecting rod	1				
68	B701406	woodruff key 3 X3.7X10	1	Y			
69	920224	piston pin	1				
70	920103	driving gear	1				
71	920225	front ring	1				
72	B701651	"o" ring Φ 2.15X16	1				
73	920012	dip stick cover	1				
74	920226	locating pin Φ 8X20	2				
75	920104	lower crankcase	1				
76	920247	hexagon bolt with flang M6X25	8				
77	920305	oil seal Φ 41.3X Φ 28X6	1				
78	920227	washer	1				
79	920228	oil drain bolt	1				
80	920013	air filter cover	1				
81	920903	air filter	1		Y		
82	920229	pin set	3				
83	920014	air filter base	1				
84	920904	carburetor gasket	2				
85	920230	air filter fixed plate	1				

86	920905	carburetor LHP18	1					
87	920906	heat shield gasket	2					
88	920907	insulation plate	1					
89	920908	connecting flange	1					
90	920909	flange gasket	1					
91	B174003	stud bolt M6X94	2					
92	920910	cylinder cushion	1					
93	920231	cylinder head cover	1					
94	920911	cylinder head cover	1					
95	B174001	stud bolt M6X32	2					
96	920232	locating pin Φ 10X15.7	2					
97	920105	cylinder head assy	1					
98	920701	spark plug NHSP LD F7TL	1			Y		
99	920233	intake valve	1					
100	B131012	hexagon bolt with flang M8X65	4					
101	920234	exhaust valve	1					
102	920507	valve spring	2					
103	920235	valve spring retainer	2					
104	920306	timing belt	1			Y		
105	920236	curved rod	1					
106	920237	sleeve	1					
107	920508	decompression torsion spring	1					
108	920106	decompression block rejection	1					
109	920015	camshaft	1					
110	920238	intake rocker arm	1					
111	920239	rocker arm shaft	2					
112	920240	exhaust rocker arm	1					
113	920241	valve adjustment screw	2					
114	920242	valve adjustment nut	2					
115	920243	muffler	1					
116	920244	muffler guard	1					
117	B131011	hexagon bolt with flang M6X76	2			Y		

PowerG[®] EXPLOSIVE DRAWING

Petrol tiller ----TDS40A (Old model:TL40B1)

File: 0020100921AA

Version: 1.0

Date: 30th April, 2010

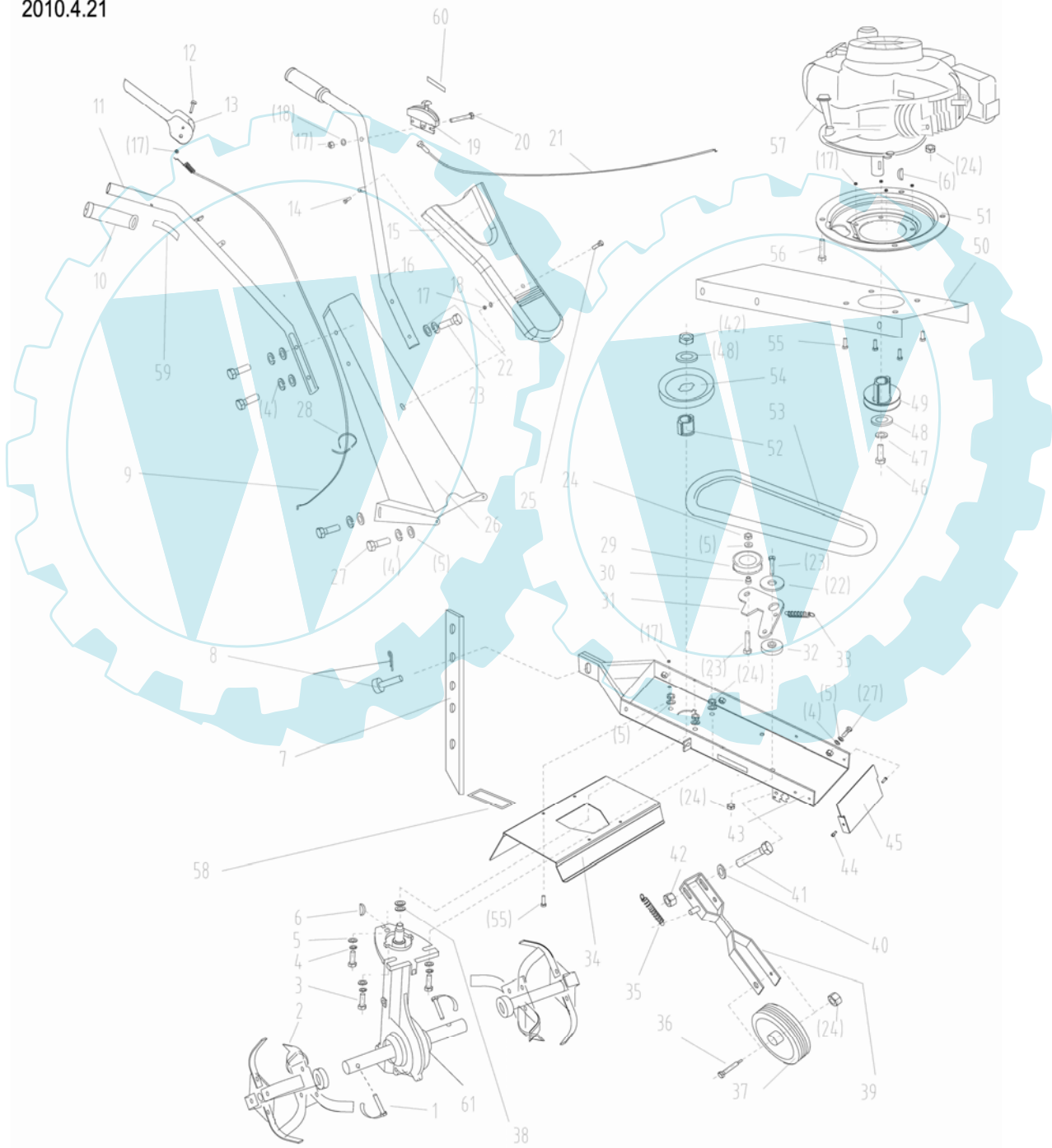
Model: TDS40&TDS40A

Apply to :

00921ZA(TDS40)

00921AA(TDS40A)

2010.4.21



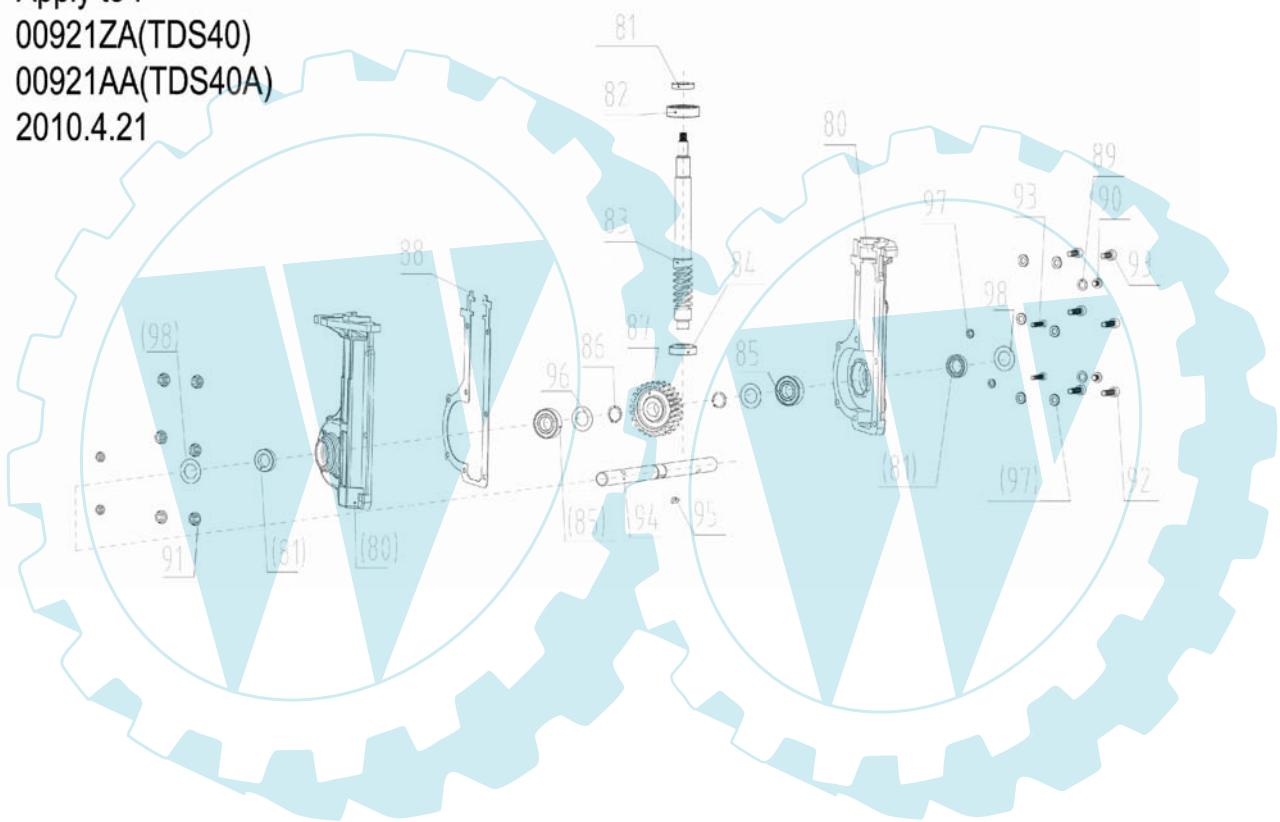
Model: TDS40&TDS40A

Apply to :

00921ZA(TDS40)

00921AA(TDS40A)

2010.4.21





Spare Parts List

File: 0020100921AA Version: 1.0 Date: 30th April, 2010

Petrol tiller ----TDS40A (Old model:TL40B1)

Pos. No	Part code	Part name	QTY	losable	damage-able	Consum-able	FOB Unit Price (USD)	Remark
1	921200	pin & clip	2	Y				
2	921201R9005	tiller assy	2			Y		
3	B124010	bolt M8×30	3					
4	B500007	spring washer d8	13					
5	B501008	washer8.5×17×2	13					
6	B701403	segment key	2					
7	921203R9005	draw bar	1			Y		
8	921204	pins& clamp spring	1					
9	921900	cable-belt tension	1					
10	921300	soft grip	2					
11	921205R9005	R.handle bar	1					
12	921206	pin D6	1					
13	921004R3000	control lever	1					
14	B400068F	self-tapping screw	2					
15	921001R3000	faceplate	1					
16	921207R9005	Left handle bar	1					
17	B217004	self-lock nut M6	11					
18	B501007	washer 6.4×12×1.4	2					
19	921002R3000	throttle lever	1					
20	B124006	bolt M6×40	1					
21	921901	cable-throttle control	1					
22	921208	washer8.5×30×3.5	5					
23	B124010	bolt M8×30	6					
24	B217005	self-lock nut M8	9					
25	B131002	flange bolt M6×16	1					
26	921209R3000	handle bar support	1					
27	B124008	bolt	6					
28	921902	tie	2					
29	921003	tension pulley	1					
30	921210	sleeve	1					
31	921211	lever-tension pulley	1					
32	921212	pivot-pulley lever	1					
33	921500	spring-pulley lever	1					
34	921213R3000	guard	1					
35	921501	spring-wheel	1					
36	921214	pivot-wheel	1					
37	921301	wheel 1	1			Y		
38	921215	washer 14.2×20×0.4	2					
39	921216R3000	wheel arm	1					
40	B501009	flat washer	1					
41	B124011	bolt M10×70	1					
42	B217006	self-lock nut M10	2					
43	921217R3000	main plate	1					
44	B131003	flange bolt	2					
45	921218R3000	pront cover	1					
46	921219	inch bolt UNF3/8" ×1"	1					
47	B500008	spring washer	1					
48	921220	washer D10/30	2					
49	921221	driving pulley	1					
50	921222	top plate	2					
51	921223R9005	engine plate	1					
52	921224	boss of driven pulley	1					
53	921302	"V"belt	1			Y		
54	921225	driven pulley	1					
55	B131004	flange bolt	8					
56	B131005	flange bolt	3					
57	009202A	engine	1					Engine:135cc
58	921903	warning label	1					
59	921904	label-belt tension	1					
60	921905	label-throttle control	1					
61	921100	gear cases assy	1					assembly
80	921101	gear cases	1					80-98.3.4.5.
81	921907	oil seal	3					
82	B700464	ball bearing	1					
83	921226	warm screw	1					
84	B700465	roller bearing	1					
85	B700463	ball bearing	2					
86	B278018	circlips	2					
87	921227	warm wheel	1					
88	921906	gear case gasket	1					
89	921228	washer -aluminium	2					
90	921229	bolt G1/8"8mm	2					
91	B217004	self-lock nut M6	8					
92	B304038	hexagon socket screw	2					
93	B304037	hexagon socket screw	6					
94	921230	tiller shaft	1					
95	B701404	segment key	1					
96	921231	flat washer	2					
97	B524006	washer of gear box	8					
98	921232	oil seal cover	2					

REMARKS:

- The above quotations are based on RMB/USD=6.8117.
- If RMB value increase over 5%, the prices should be adjustable.
- Prices normally valid for one year from the day we offer,except the case we consider it invalid.
- All prices should be subject to our final confirmation.